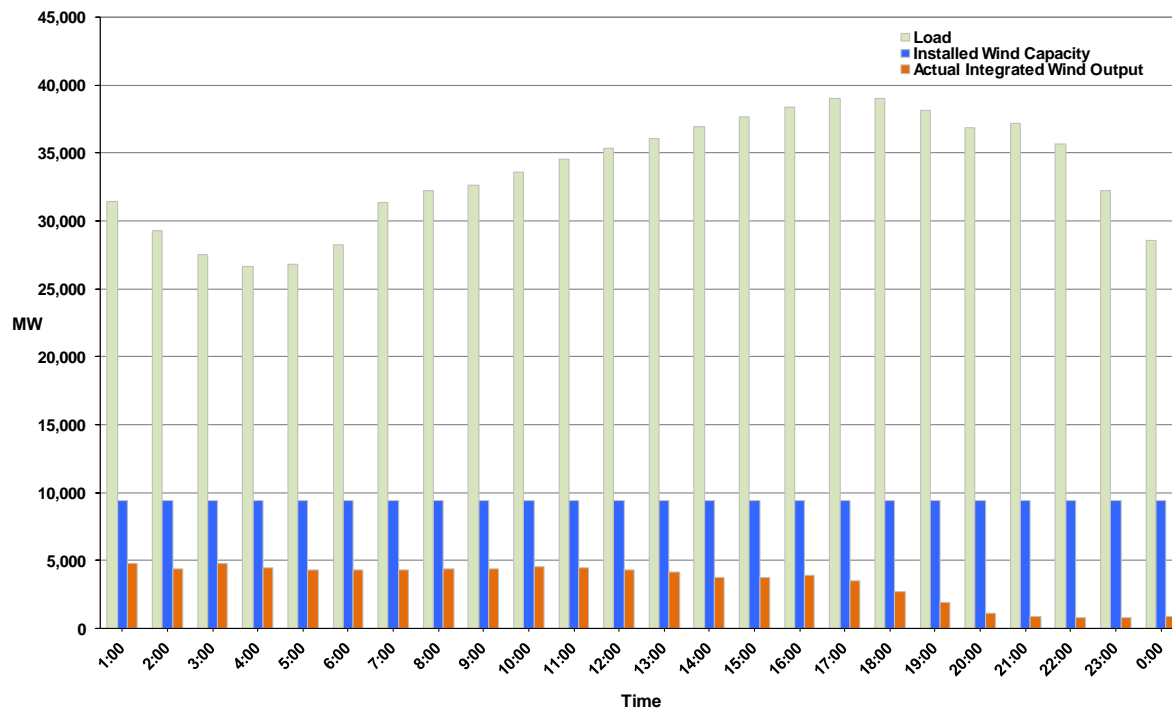




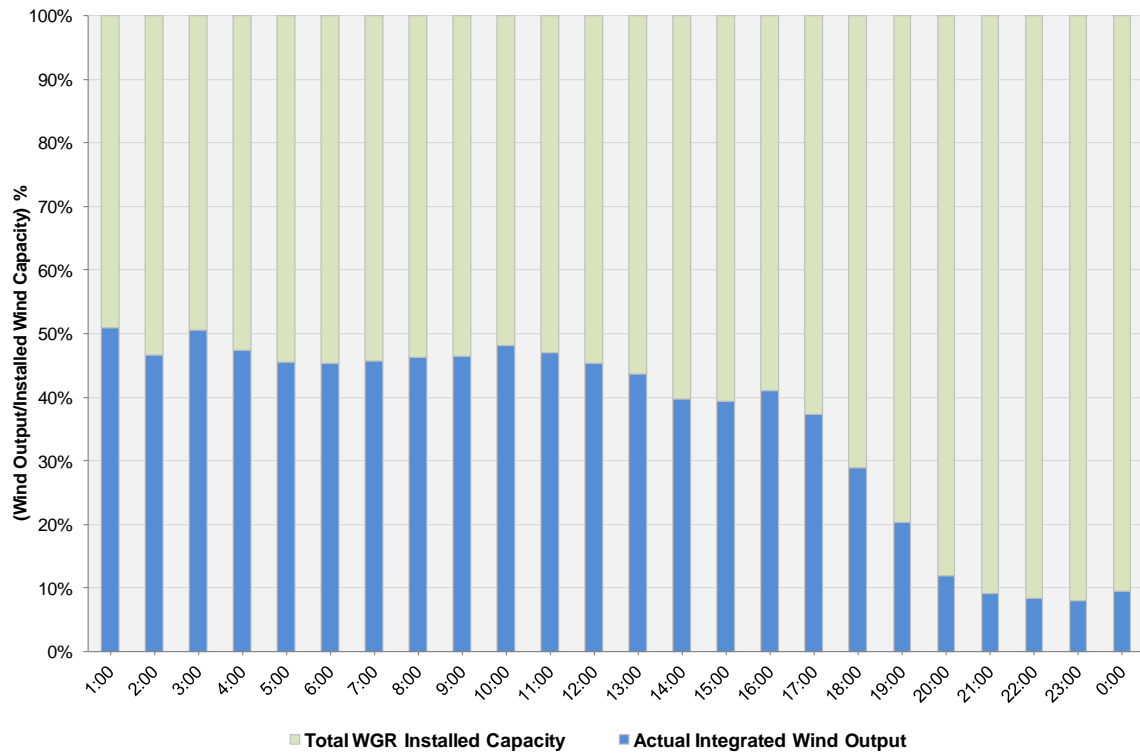
## ERCOT Grid Operations Wind Integration Report: 04/11/11

Peak Load	<b>39,043 MW</b>
Load Peak Hour	<b>18</b>
Wind Record 12/11/10	<b>7,227 MW</b>
Max Wind Value	<b>5,248 MW</b>
Wind Peak Time	<b>00:02:32</b>
Wind Integration %	<b>16.09%</b>

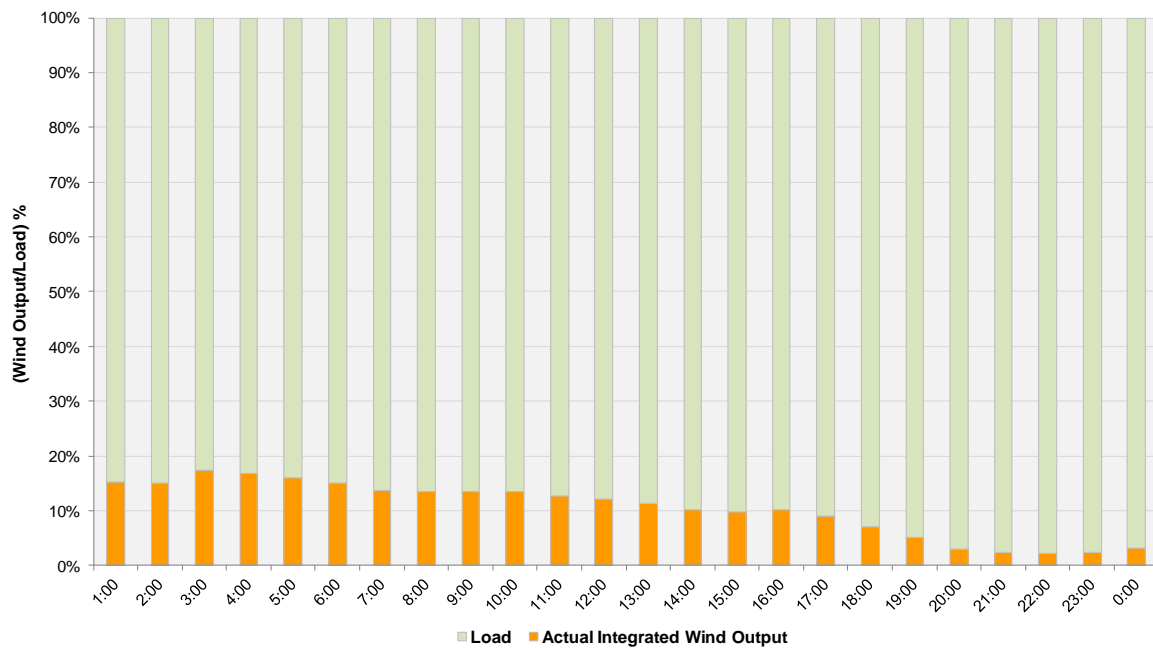
Hourly Average Actual Load vs. Actual Wind Output  
04-11-2011



**Actual Wind Output as a Percentage of the Total Installed Wind Capacity**  
**04-11-2011**



**Actual Wind Output as a Percentage of the ERCOT Load**  
**04-11-2011**



ERCOT Load vs. Actual Wind Output 4/4/2011 - 4/11/2011

